

A photograph of a lush green forest with a waterfall cascading over rocks, serving as the background for the title page.

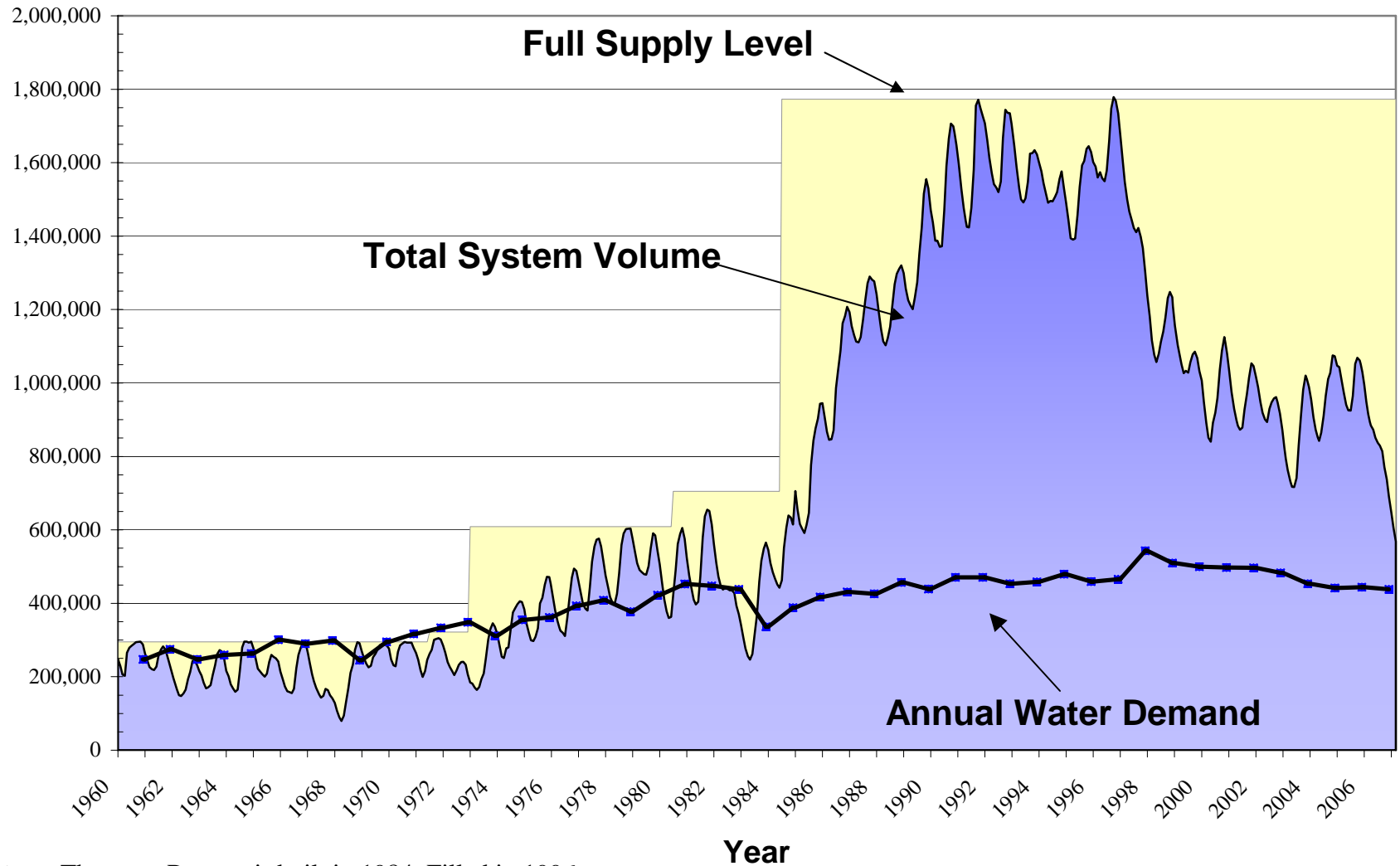
Water Resource Strategy for Melbourne

by

**Rob Skinner
Managing Director**

24 July 2007

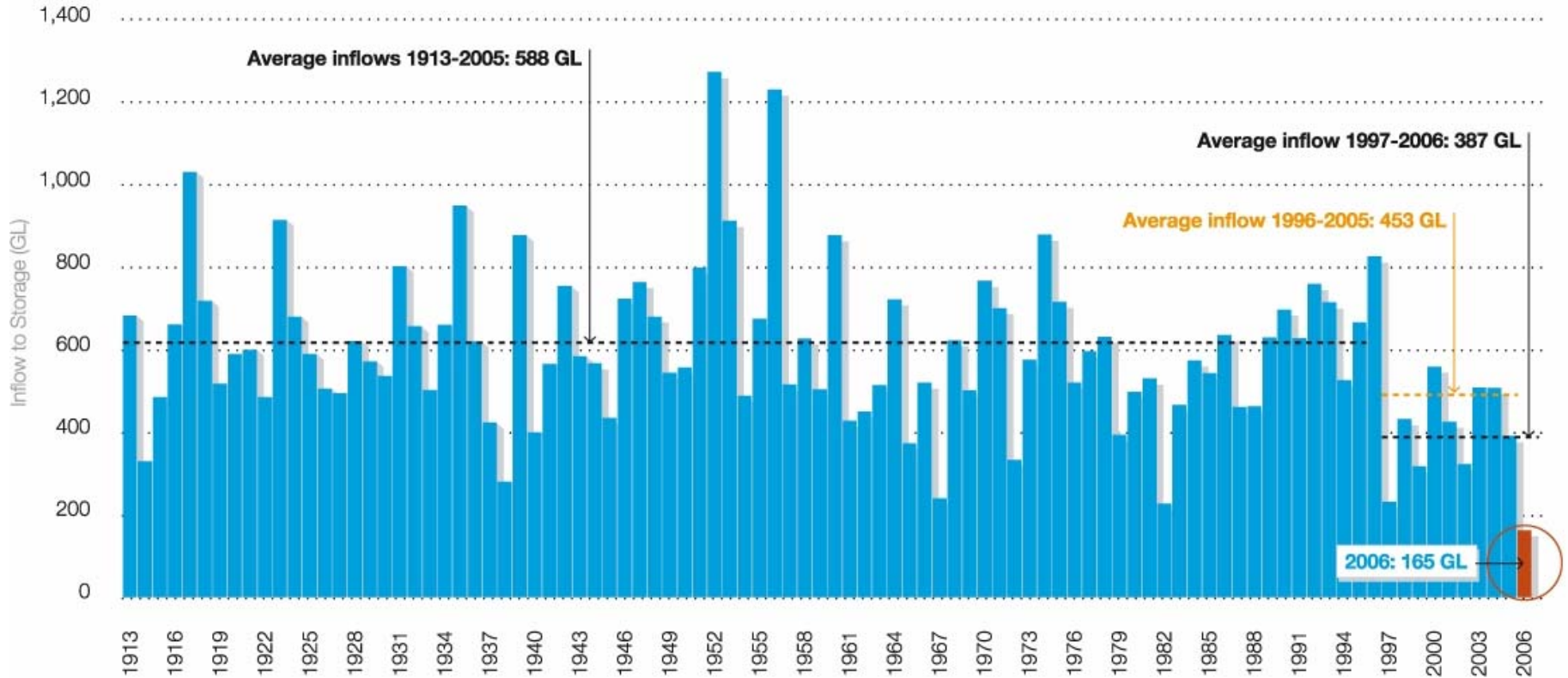
Total System Volume and Annual Demand (ML)



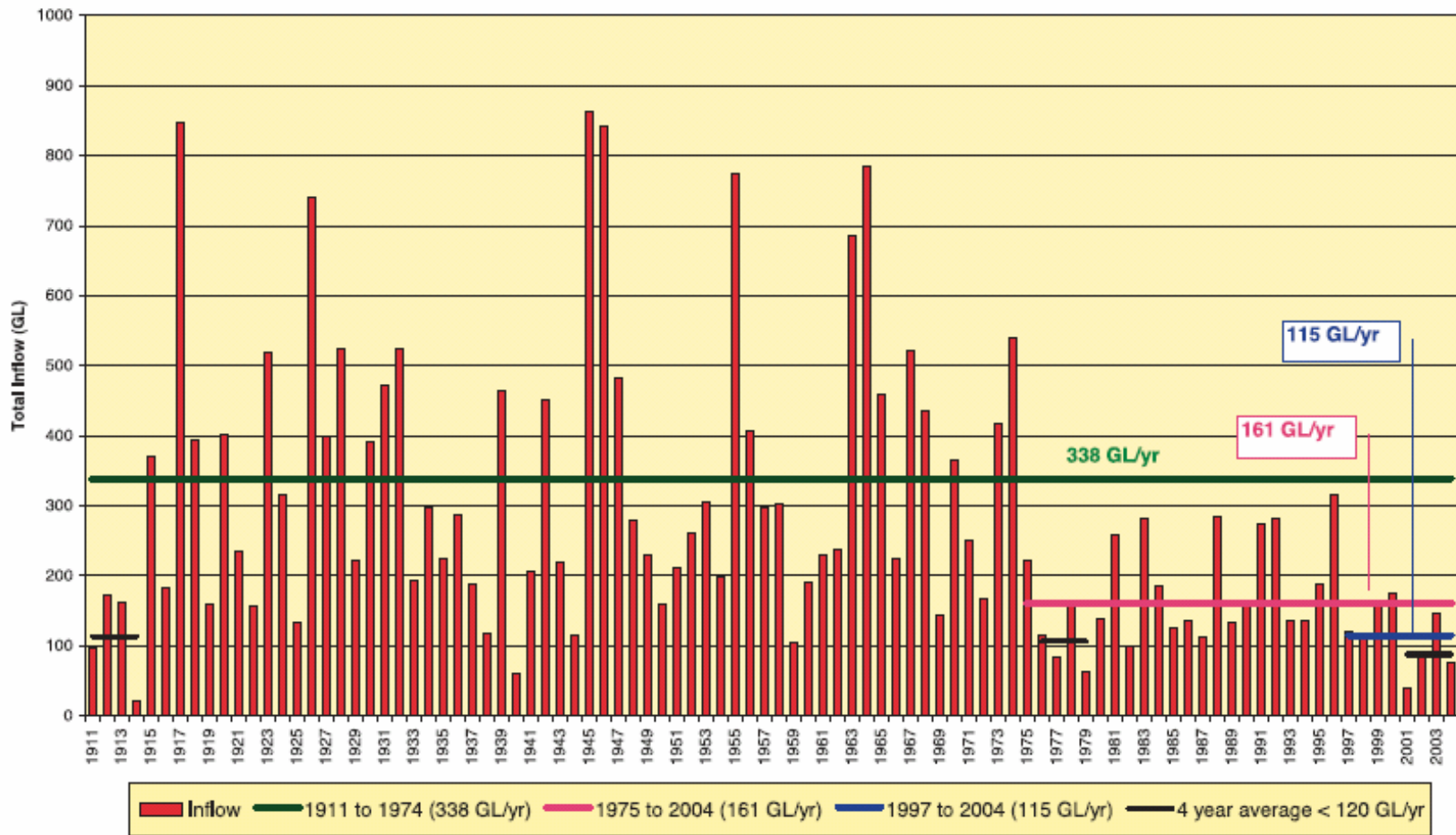
Note: - Thomson Reservoir built in 1984. Filled in 1996.

Melbourne storage inflows 1913-2006

Inflows in 2006 were the worst in recorded history



Streamflow – Perth’s major storages



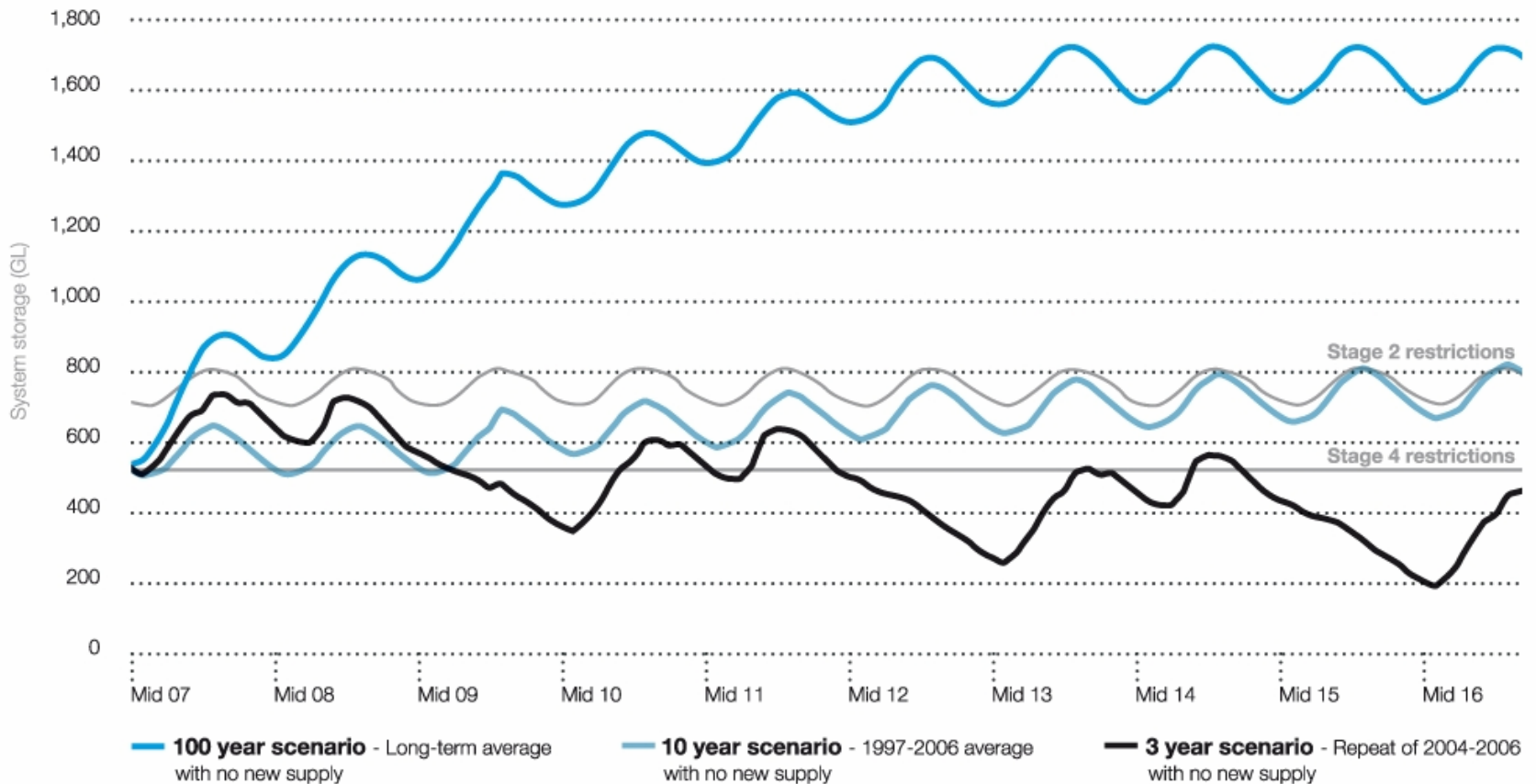
Note: A year is taken as May to April ("2004": May 2004 to Apr 2005 is an estimate only)

Figure 3.1 Yearly streamflow for major metropolitan surface water sources.

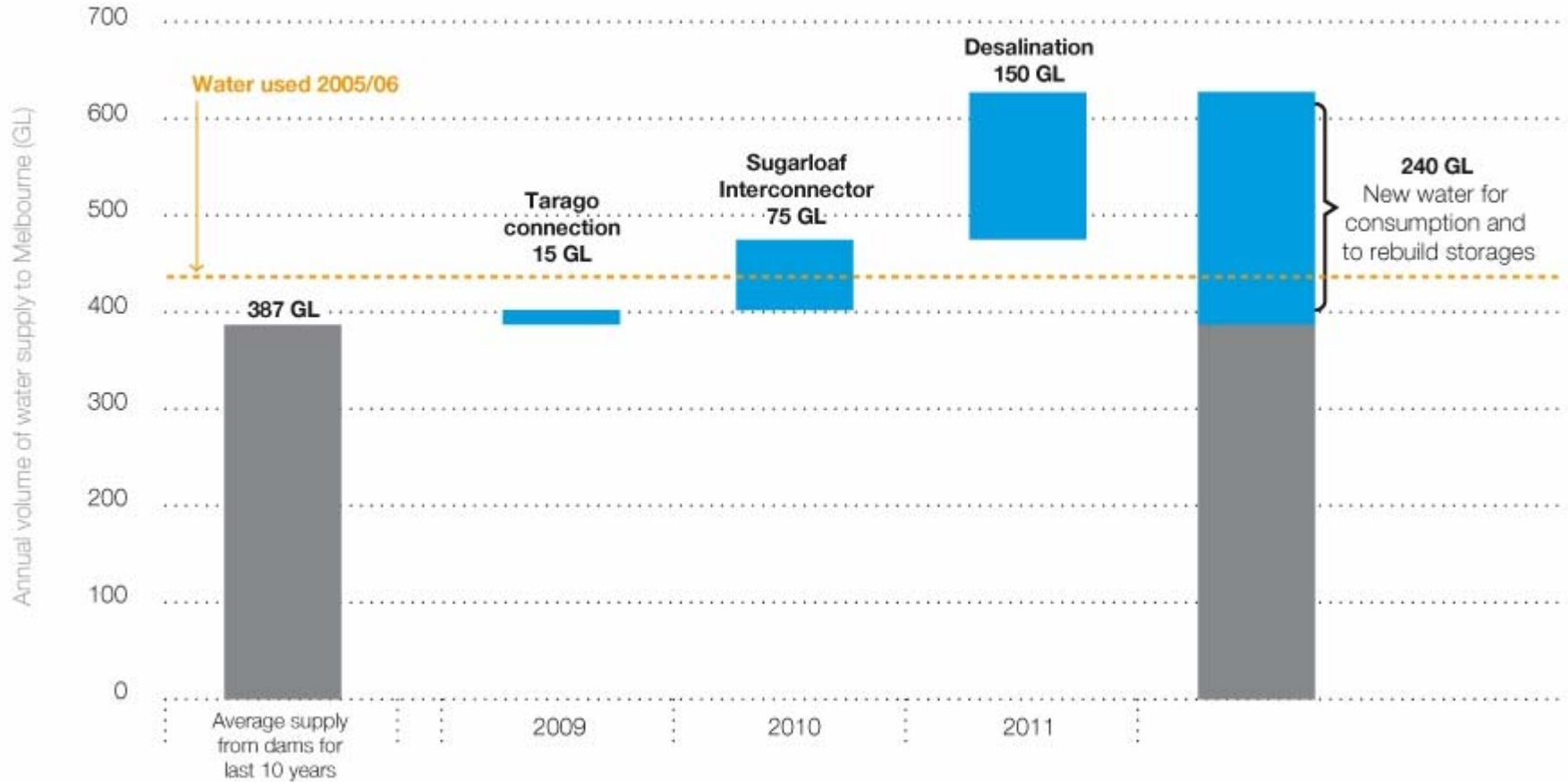
Source: Water Corporation, Integrated Water Supply Scheme Source Development Plan 2005

Forecast Melbourne storage levels 2007-2016 under three inflow scenarios

With no new supply

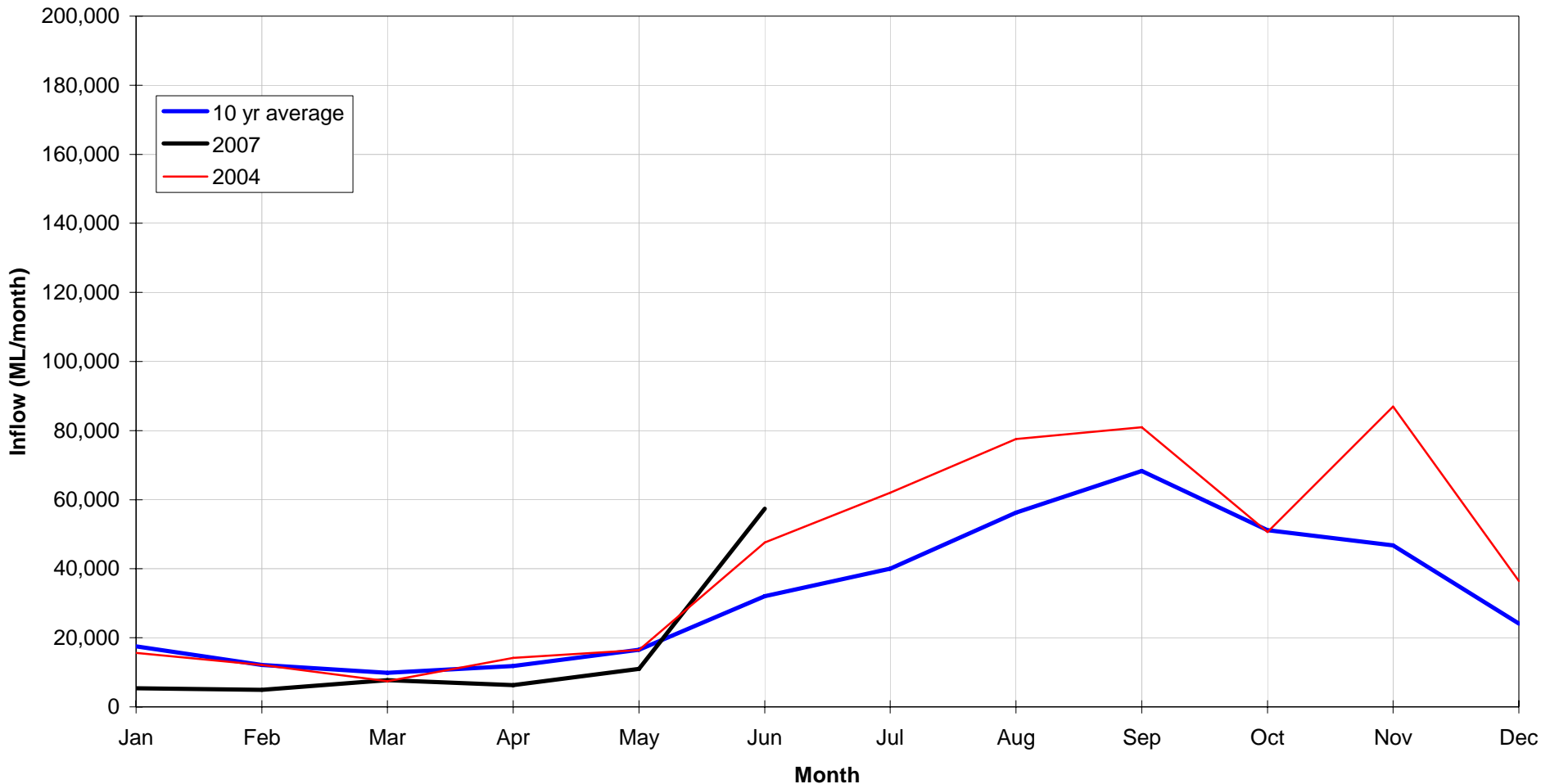


New water for Melbourne



Streamflows into Reservoirs

Total Inflow to Thomson, Upper Yarra, Maroondah and O'Shannassy Reservoirs



Note: “The outlook for total September-quarter rainfall (July to September) over south-eastern Australia, shows no strong swings in the odds towards either above-normal or below-normal rainfall. The chances of accumulating at least average rain for the season are relatively close to 50%”
(Bureau of Meteorology Seasonal Outlook, 26 June 2007)

Melbourne Water Grid



..... New projects

- A** Sugarloaf Interconnector
- B** Melbourne - Geelong Interconnector
- C** Desalination at Wonthaggi
- D** Tarago Reservoir re-connection

..... Under investigation

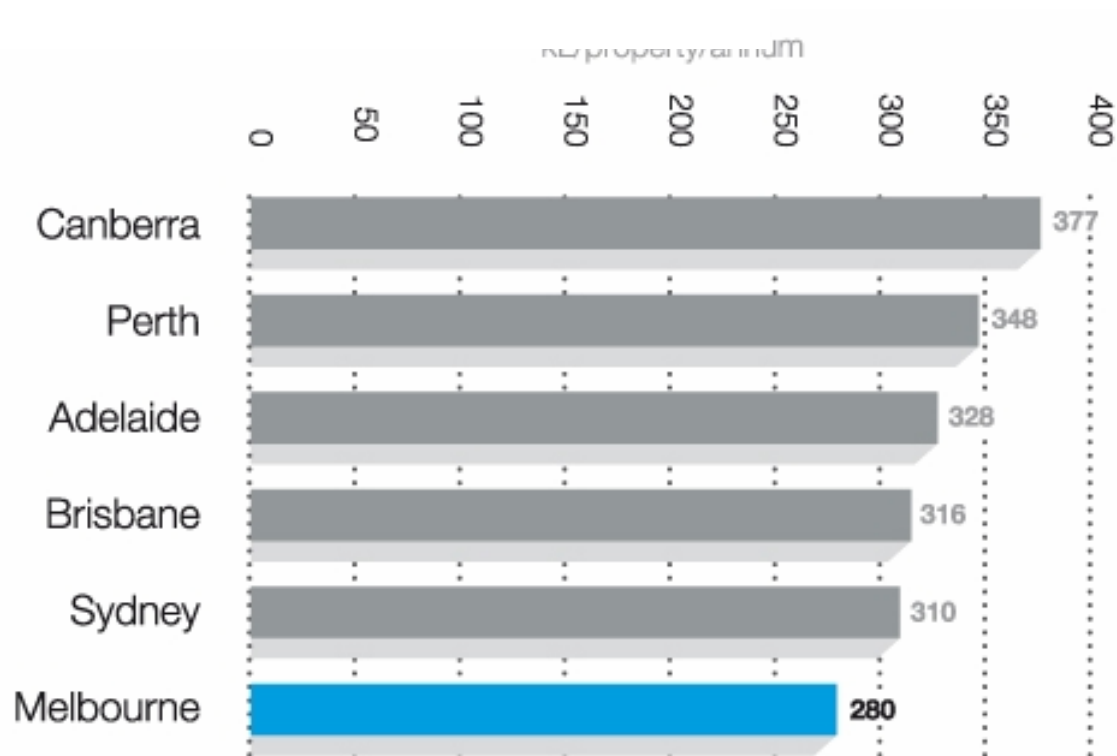
- E** Eastern Water Recycling Proposal
- F** Environmental flows (Yarra River)

— Melbourne Water Main

- Service Reservoir
- Water catchments

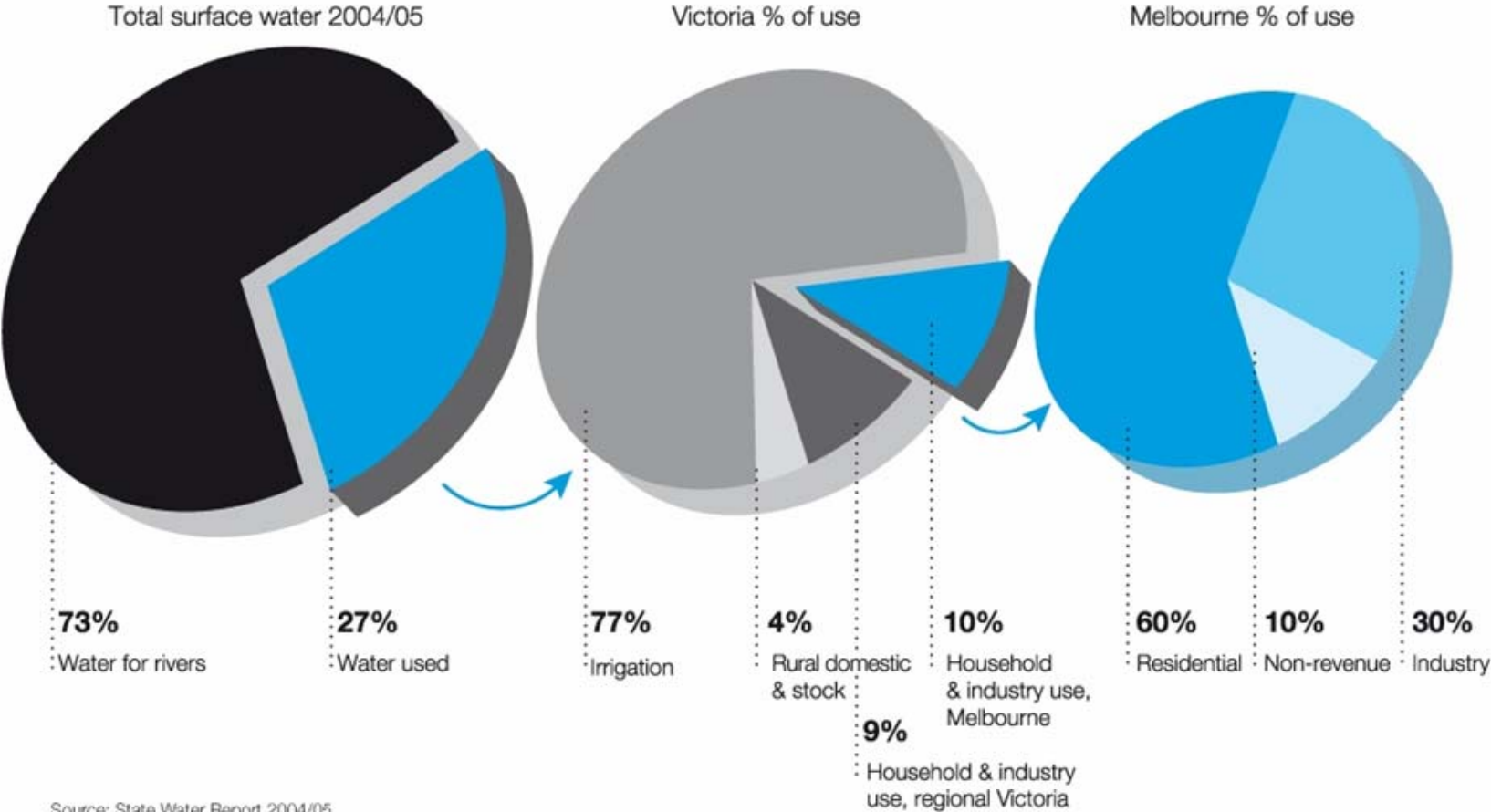
Australian capital city water use

Melbourne is the most water efficient capital city



Source: National Water Commission and Water Services Association of Australia, National Performance Report 2005-06

Water use in Victoria and Melbourne - % used by sector



Source: State Water Report 2004/05

Melbourne's storages 2002-2007

Storages would be 250GL lower without conservation

