

# 2025 **COMMUNITIES** OF BEST PRACTICE (CoBP)

Environmental, Social, Governance (ESG)  
Artificial Intelligence (AI)

>ceda





# SUPPORTING POSITIVE CHANGE THROUGH COMMUNITIES OF BEST PRACTICE

CEDA believes that curiosity has the power to create positive change and move the nation forward.

Progress 2050 is our vision for a better Australia, and we are committed to supporting our Members in taking practical and meaningful action now to create the change that is required for the future we want.

By bringing members together in ESG and AI Communities of Best Practice to share their experience, knowledge, expertise, learnings and ambitions, we can accelerate that change.

By lifting performance and improving outcomes across ESG and the adoption of responsible AI we will contribute to a better future for all Australians.

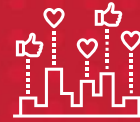
# WHY SHOULD MY ORGANISATION JOIN CEDA'S COMMUNITIES OF BEST PRACTICE?



Lift capability and confidence with access to forums and workshops with expert speakers and practical case studies



Best practice sharing  
Contribute online and in-person and learn from professionals to enhance your ESG and AI initiatives



ESG and AI brains trust to help you address your burning questions with domain experts



Build professional networks  
Connect with industry leaders, AI practitioners, and thought leaders from various sectors



Be part of a collective voice that shapes the future of ESG and AI and contribute to discussions and initiatives that influence ESG and AI practices



Access to research and insights: Stay ahead of the curve with the latest advancements, trends and regulatory updates in ESG and AI



# 2025 SUBSCRIPTION OPTIONS

## AI & ESG Communities

Subscription includes access for **all employees** to:

- Online and face-to-face forums, panels, workshops and immersions
- Session recordings and snapshot reports
- Online closed LinkedIn discussion community
- Additional resources and content

### Lead

Both of CEDA's Communities of Best Practice are included in Lead membership

### Elevate

12-month subscription per Community

ESG CoBP \$1,950

AI CoBP \$1,950

**Subscribe to both and receive a 10% discount = \$3,510**

### Discover

12-month subscription per Community

ESG CoBP \$1,950

AI CoBP \$1,950

#### THE FINE PRINT:

Subscriptions are billed annually and are non-refundable.  
CoBP participation is only available to employees of organisations who hold an active CEDA membership.  
All amounts exclude GST.



# AI COMMUNITY OF BEST PRACTICE

## Foundation Partner



## Community Partners



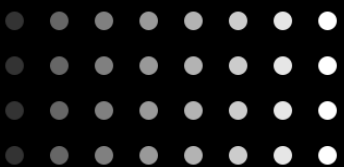
**AI has the potential to transform products, services, processes and ways of working in Australia.**

**Public trust in the development, adoption and use of AI across all sectors is critical to enabling Australia to make the most of our future opportunities.**

**Building capabilities across developers and users of AI as well as an understanding of community and stakeholder expectations are fundamental to creating a sustainable and competitive future industry.**

**CEDA is uniquely placed to do this.**

**Melinda Cilento**  
Chief Executive, CEDA



# AI CoBP PROGRAM

## The goal:

- CEDA's AI Community of Best Practice (CoBP) seeks to build a network of cross-sector professionals to improve understanding, adoption and ethical use of AI and GenAI in a way that builds trust, improves policy and lifts productivity.

### 2025 Program Design:

The 2025 AI CoBP program has been designed with community feedback and guided by AI Foundation and community partners.

The AI program will include a minimum of 6 live online sessions and case studies as well as 4 in-person AI strategy session workshops.

Additional sessions to be added in alignment with the National AI Centre product launches throughout 2025.

### 2025 Program Snapshot:

- Responsible AI Advantage (April)
- AI In-person workshops (April, Sept, Nov)
- AI Procurement (June)
- Catalysing the Australian AI Ecosystem (July)
- Designing AI We Can Trust (August)
- AI Summit (October)
- Redefining Business Value in the Age of AI (November)

# AI CoBP PROGRAM

February 19th 12pm – 1:30pm (AEDT)	Thursday 10 April 12pm – 1:30pm (AEST) Online via Teams	May In-person, Melbourne, RMIT	Thursday 19 June 12pm – 1:30pm (AEST) Online via Teams	Thursday 3 July 12pm – 1:30pm (AEST) Presentation	Thursday 24 July 12pm – 1:30pm (AEST) In-person, Brisbane
Headwinds and Tailwinds 2025	The Responsible AI Advantage: Risk, Governance and the Competitive Edge	AI Strategy Design	AI on Your Terms: AI Procurement for Australian Businesses	AI in Healthcare Implementation Case Study: New Rules of Engagement	Catalysing the Australian AI Ecosystem
Key contributors: Beth Worrell, NAIC, Simon Burns G+T, Dr Rahil Garnavi RMIT, Chris Doleman Actuaries Institute	Key contributors: Beth Worrell NAIC, Simon Burns G+T, Dr Rahil Garnavi RMIT, Dr Kate Conroy QUT, Mark Stegar, AEMO	Key contributors: Sherman Young, DVC Education and VP, Dene Cecci, Director of Students, Prof Karin Verspoor Exec Dean Computing Tech.	Key contributors: Dr Cari Millar IEEE, Tom Newby Co-Founder ProcurePro, Emma Newell Woolworths, Simon Burns, G+T.	Key contributors: Dr Lana Bell Ramsay Health, Assoc Prof Catarina Pinto-Moriera UTS, Assoc Prof (Dr) Kieran LePastrier, Rhonda Morton, Streamliners	Key contributors: Professor Fahim Khondaker BDO, Beth Worrall NAIC, Chandon Potukuchi Tech One.
<b>Learning Outcomes:</b> <ul style="list-style-type: none"> <li>Learn about key developments in the Australian regulatory environment including the Voluntary AI Safety Standards and the implementation of ethical principles</li> <li>Understand UK and US AI policy, regulatory environment and investment landscape</li> <li>Hear about Deep Seek and what it means for the accessibility opportunity for Australian small business to AI large language models</li> </ul>	<b>Learning Outcomes:</b> <ul style="list-style-type: none"> <li>Understanding the major risks in deploying AI</li> <li>Applying relevant policies and frameworks</li> <li>Case study: Implementing Responsible AI</li> <li>RAI as a competitive advantage</li> </ul>	<b>Learning Outcomes:</b> <ul style="list-style-type: none"> <li>Explore how large organisations can advance their AI maturity by embedding responsible practices into strategy, workforce capability, and operations.</li> <li>RMIT AI Implementation Case Study, spanning education, research, enterprise systems, governance, and industry-facing capability uplift.</li> </ul>	<b>Learning Outcomes:</b> <ul style="list-style-type: none"> <li>Risks and considerations in AI procurement</li> <li>Understanding the long-term impacts of investment in AI</li> <li>Recommendations for AI procurement</li> </ul>	<b>Learning Outcomes:</b> <ul style="list-style-type: none"> <li>Case study in AI implementation from strategy to deployment</li> <li>Applied ethical and regulatory evaluation</li> <li>Considerations in scaling implementation</li> <li>Lessons learned</li> </ul>	<b>Learning Outcomes:</b> <ul style="list-style-type: none"> <li>Awareness of the NAIC Ecosystem report key findings</li> <li>Identification of opportunity areas for Australian businesses</li> <li>Strategic insights into R and D and workforce development</li> </ul>

\*\*The program schedule is subject to change and will remain flexible to respond to local and global developments



# AI CoBP PROGRAM 2025 continued

<b>Tuesday 19 August</b> <b>10:00 – 11:30am (AEST)</b> <b>Online via Teams</b>	<b>Thursday 21 August</b> <b>12:00pm – 1:30pm</b> <b>Online</b>	<b>October Tues 21, Wed 22</b> <b>In-person Brisbane</b> <b>Online</b>	<b>Tuesday 4 November</b> <b>10am – 12:00pm (AEDT)</b> <b>In-person Sydney</b>	<b>Tuesday 18 November</b> <b>12:00pm – 1:30pm (AEDT)</b> <b>Online via Teams</b>	<b>Additional collaborative event</b>
<b>How to Design AI We Can Trust</b>	<b>AI, Climate and the Environment: Strategies to reduce the impact</b>	<b>CEDA AI Leadership Summit</b>	<b>TBC</b>	<b>Shadow AI Spotlight: Illuminating the Dark Side of Workplace Innovation</b>	<b>Creative Works and AI Watermarking</b>
<b>Key contributors:</b> Professor Fang Chen UTS, Jonathon Chen Suncorp, Jade Haar NAB.	<b>Key contributors:</b> TBC	<b>Key contributors:</b> TBC	<b>Key contributors and host:</b> UTS	<b>Key contributors:</b> TBC	<b>Lead:</b> Creative Australia  <b>Key contributors:</b> NAIC, Canva, UTS
<b>Learning Outcomes:</b> <ul style="list-style-type: none"> <li>• Building the basis of trust in your AI strategy</li> <li>• Learn the importance of the human in the loop: Transparency and explainability</li> <li>• Communicating with your customers</li> </ul>	<b>Learning Outcomes:</b> <ul style="list-style-type: none"> <li>• Deep dive into the report's data</li> <li>• Learn key strategies to reduce the impact of increasing energy and water demands of AI infrastructure and suitability</li> <li>• Hear industry perspectives on strategic approaches, initiatives and programs to reduce impact</li> </ul>	<b>Learning Outcomes:</b> Designed for leaders and organised by CEDA and the National AI Centre. This annual summit connects executives, decision makers and thought leaders from across business, government and academia to advance Australia's AI ambitions for long-term prosperity  <b>*Note:</b> Tickets to the AI Leadership Summit are available separate to community subscription	<b>Learning Outcomes:</b> TBC	<b>Learning Outcomes:</b> <ul style="list-style-type: none"> <li>• Identify and assess shadow AI risks</li> <li>• Learn strategies to create change with employees with education and compliance</li> <li>• How to create sustainable governance practices</li> <li>• Understand practical ways to monitor and detect shadow AI usage</li> </ul>	<b>Dates/Details:</b> TBC

# CURRENT AI COMMUNITY SUBSCRIBERS

**70+ Organisations in  
the first 2 months  
100+ Individuals in the  
LinkedIn Community**

A new CEDA Community of Best Practice in 2025

- Actuaries Institute
- AEMO
- AGL
- Allens
- Amazon Web Services
- Anthesis (Australia)
- APA Group
- Arcadis Australia Pacific
- Arup
- Aurecon Australasia
- Australia Post
- Australian Bureau of Statistics
- Australian Unity
- BDO
- BGIS
- BHP
- BP Australia
- Bupa
- Chartered Accountants Australia and New Zealand
- Clayton Utz
- Commonwealth Bank of Australia
- Commonwealth Treasury
- CPB Contractors
- Deloitte
- DXC Technology Australia
- EY
- Federal Department of Education
- Federal Department of Health and Aged Care
- Federal Department of Industry, Science and Resources
- Fragomen
- GHD
- Gilbert + Tobin
- Google
- HanRoy
- HBF Health
- HealthPathways
- HESTA
- Indigenous Business Australia
- Jacobs
- KPMG
- McConnell Dowell
- Microsoft
- National Australia Bank
- Nous Group
- Plenary Group
- Purple
- PwC Australia
- Queensland Department of Energy and Climate
- Reserve Bank of Australia
- Rio Tinto
- RMIT
- RSM
- SEC Newgate Australia
- Serco
- SkillsIQ
- Synergy
- TechnologyOne
- Telstra
- UniSuper
- University of Melbourne
- University of Technology Sydney
- UNSW Sydney
- Urbis
- WeMoney
- Wesfarmers
- Westpac
- Woodside Energy
- Woolworths Group
- Worley Services
- WSP

>ceda

# ESG **COMMUNITY** OF BEST PRACTICE

Community Partners

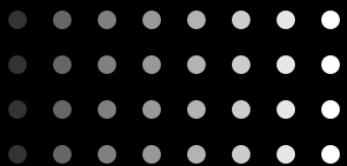




**ESG is not a journey for the solo traveller. We need collaboration, creativity, and honest sharing between industries and organisations to drive the many aspects of sustainability, which is what CEDA's ESG Community of Best Practice enables and why I am a member.**

**Brian Kraft**

Principal Consultant, Human Rights, Anthesis Group



# ESG CoBP PROGRAM

## The goal:

CEDA's ESG Community of Best Practice (CoBP) seeks to advance best practice across evolving environmental, social and governance issues by curating timely, actionable information and building a network of leaders to progress ESG performance in Australia.

### 2025 Program Design:

The 2025 ESG CoBP program has been designed with community feedback and guided by ESG community partners.

The 2025 program will include over 7 engagement opportunities from online discussion forums, panels and case studies in addition to 4 smaller face-to-face workshops, and an immersion.

### 2025 Program Snapshot:

- Human Rights: regulation, reporting and relationships(March)
- Mandatory climate related disclosures (April, Sept, Nov)
- Post-election ESG update (June)
- Supercharging 'S' in ESG (July)
- Circular economy immersion (August)
- ESG and uninsurable Australia (Sept)
- Integrating nature positive beyond compliance (November)

# ESG CoBP PROGRAM

<b>Wednesday 19 February</b> <b>12pm – 1:30pm (AEDT)</b> <b>Online via Teams</b>	<b>Tuesday 15 April</b> <b>12pm – 1:30pm (AEST)</b> <b>Online via Teams</b>	<b>Tuesday 29 April</b> <b>10am – 12:00pm (AEST)</b> <b>In-person, Melbourne</b>	<b>Monday May 12</b> <b>10am – 11:00am</b> <b>Online via Teams</b>	<b>Thursday 19 June</b> <b>12pm – 1:00pm (AEST)</b> <b>Online via Teams</b>	<b>Thursday 31 July</b> <b>12pm – 1:30pm (AEST)</b> <b>Online via Teams</b>
ESG Outlook for 2025 and Beyond	The Business of Human Rights: Regulation, Reporting and Relationships	Cutting Through the Complexity of Mandatory Climate Disclosures	Productivity Commission Circular Economy Interim Report Briefing	Post-election ESG Update	Supercharging the ‘S in ESG for Business Innovation
Key contributors: Ilona Millar, G+T Brian Kraft, Anthesis	Key contributors: Lorraine Finlay, Australian Human Rights Commissioner, ESG Community Partners	Key contributors: Ilona Millar G+T, Brian Kraft and Gregor Theinschnack, Anthesis	Key contributors: TBC	Key contributors: Ilona Millar, G+T. Additional speakers TBC.	Key contributors: Dr Cathy Robinson CSIRO, Catia Davin, Founder of UN Aust Social Good Summit, Simon Faivel Co-Chair Social Impact Measurement Network of Aust (SIMNA)
<b>Learning Outcomes:</b> <ul style="list-style-type: none"> <li>• 2025 regulation and legislative updates and social license</li> <li>• Explore the shifting global geopolitical environment and global ESG developments</li> <li>• Understand the federal election implications on ESG</li> <li>• Discuss mandatory reporting developments</li> </ul>	<b>Learning Outcomes:</b> <ul style="list-style-type: none"> <li>• International perspective, exploring Human Rights reporting developments and what it could mean for an Australian Human Rights Act</li> </ul>	<b>Learning Outcomes:</b> <ul style="list-style-type: none"> <li>• Overview of the regulatory landscape</li> <li>• Engaging and activating teams across the organisation</li> <li>• Building compliant reporting</li> <li>• Case study</li> </ul>	<b>Learning Outcomes:</b> <ul style="list-style-type: none"> <li>• Aims of PC Circular Economy Report</li> <li>• How to contribute to the consultation</li> </ul>	<b>Learning Outcomes:</b> <ul style="list-style-type: none"> <li>• Trends and regulatory update</li> </ul>	<b>Learning Outcomes:</b> <ul style="list-style-type: none"> <li>• The business case for social sustainability and social impact</li> <li>• Understanding best practice metrics for measuring social sustainability and social impact into business strategy</li> <li>• Unlocking value through social sustainability and social impact commitments</li> <li>• Case study</li> </ul>

**\*\*The program schedule is subject to change and will remain flexible to respond to local and global developments**



# ESG CoBP PROGRAM continued

Thursday 21 August Climate Online, TBC	Tuesday 16 September 10am – 12:00pm (AEST) In-person, Sydney	Wednesday 17 September 10am – 12:00pm (AEST) In-person, Sydney	Thursday 18 September 11am-12:00pm (AEST) Online via Teams	6 November 10am – 12:00pm (AEST) In-person, Brisbane	13 November 12pm – 1:30pm (AEDT) Online via Teams
AI, Climate and the Environment: Strategies to reduce the impact	Cutting Through the Complexity of Mandatory Climate Disclosures	Circular Economy Case Study and Workshop with Koskela and Arup	ESG and Uninsurable Australia	Cutting Through the Complexity of Mandatory Climate Disclosures	Getting Back to Nature: Integrating Nature Positive Beyond Compliance
Key contributors: TBC	Key contributors: G+T, Anthesis	Key contributors: G+T, Anthesis	Key contributors: Liam Dillon CEDA, Carla Wilson Allianz, Saranjit Paddam Finity. Professor Paula Jarzabkowski University of Queensland.	Key contributors: G+T, Anthesis	Key contributors: TBC
<b>Learning Outcomes:</b> <ul style="list-style-type: none"> <li>• Deep dive into the report's data</li> <li>• Learn key strategies to reduce the impact of increasing energy and water demands of AI infrastructure and suitability</li> <li>• Hear industry perspectives on strategic approaches, initiatives and programs to reduce impact</li> </ul>	<b>Learning Outcomes:</b> <ul style="list-style-type: none"> <li>• Overview of the regulatory landscape</li> <li>• Engaging and activating teams across the organization</li> <li>• How to build compliant reporting</li> <li>• Case study</li> </ul>	<b>Learning Outcomes:</b> <ul style="list-style-type: none"> <li>• Understand the carbon and landfill challenges of large retail and office furniture</li> <li>• Explore report insights including recommendations</li> <li>• Hear from Koskela Founder how they have innovated their business model to deliver impact and increase circularity principles.</li> </ul>	<b>Learning Outcomes:</b> <ul style="list-style-type: none"> <li>• Understanding the ESG insurance landscape in Australia</li> <li>• Exploring ESG integration in the insurance business model</li> <li>• The materiality of ESG risks to various lines of business and economic sectors</li> </ul>	<b>Learning Outcomes:</b> <ul style="list-style-type: none"> <li>• Overview of the regulatory landscape</li> <li>• Engaging and activating teams across the organization</li> <li>• How to build compliant reporting</li> <li>• Case study</li> </ul>	<b>Learning Outcomes:</b> <ul style="list-style-type: none"> <li>• An overview of nature-based solutions and co-benefits</li> <li>• Taskforce on Nature-related Financial Disclosures, the evolution of recommendations</li> <li>• How to engage traditional owners and first nation partners</li> <li>• Incorporating nature capital in decision-making</li> </ul>

**\*\*The program schedule is subject to change and will remain flexible to respond to local and global developments**

# CURRENT ESG COMMUNITY SUBSCRIBERS

**100+ Organisations  
500+ Individuals in  
the LinkedIn  
Community**

- Actuaries Institute
- AEMO
- AGIG Group Pty Ltd.
- AGL
- Allens
- Allianz Australia
- Amazon Web Services
- Anthesis (Australia)
- APA Group
- Arcadis Australia Pacific
- Arup
- Aurecon Australasia
- Australia Post
- Australian Bureau of Statistics
- Australian Unity
- BDO
- BGIS
- BHP
- BP Australia
- Bupa
- Chartered Accountants Australia and New Zealand
- Clayton Utz
- Commonwealth Bank of Australia
- Commonwealth Treasury
- CoreLogic
- CPB Contractors
- CS Energy
- Deloitte
- DXC Technology Australia
- EY
- Federal Department of Education
- Federal Department of Health and Aged Care
- Federal Department of Industry, Science and Resources
- Fragomen
- GHD
- Gilbert + Tobin
- Google
- Governance Institute of Australia
- HanRoy
- HBF Health
- HealthPathways
- HESTA
- IAG
- Indigenous Business Australia
- IPART
- Jacobs
- Jemena
- KPMG
- McConnell Dowell
- Microsoft
- Moonee Valley City Council
- National Australia Bank
- Nous Group
- People's Choice Limited
- PEXA
- Plenary Group
- Purple
- PwC Australia
- Queensland Department of Energy and Climate
- Queensland Treasury
- RAA of SA
- Reserve Bank of Australia
- Rio Tinto
- RSM
- SEC Newgate Australia
- Serco
- SkillsIQ
- SLR Consulting
- Stantec
- Stanwell Corporation
- STREAT
- Synergy
- Tasmania Department of Premier & Cabinet
- TBH
- TechnologyOne
- Telstra
- The Smith Family
- UN Global Compact Network Australia
- UniSuper
- University of Technology Sydney
- UNSW Sydney
- Urbis
- Victoria University
- WA Department of Jobs, Tourism, Science and Innovation
- WA Department of Primary Industries and Regional Development
- Water Corporation
- WaterNSW
- WeMoney
- Wesfarmers
- Westpac
- WolfPeak
- Woodside Energy
- Woolworths Group
- Worley Services
- WSP

# ABOUT CEDA

## WHO ARE WE?

CEDA (the Committee for Economic Development of Australia) is an independent, non-profit organisation providing thought leadership and policy perspectives on the economic and social issues affecting Australia. Founded in 1960 by Sir Douglas Copland, one of the most influential figures in Australian economics at the time, CEDA has offices in Melbourne, Adelaide, Sydney, Brisbane and Perth.

## WHO ARE WE FOR?

As a membership-based organisation, CEDA works together with members (organisations) and trustees (employees at member organisations) from Australia's government and academic communities to the nation's biggest corporations— building reach and influence across a diverse network.

## HOW WE WORK

Conducting independent research, curating content, facilitating nationwide events and offering educational programs, CEDA collaborates, debates, influences and positively impacts long term public policy. Revenue is predominantly generated through memberships and events, and ensures we remain independent.

## WHY WE MATTER

CEDA identifies long-term social and economic issues, explores alternative approaches and seeks practical solutions to improve economic, social and environmental policy— so ultimately long-term prosperity is achieved for all Australians.



**Find out more:**

**[membership@ceda.com.au](mailto:membership@ceda.com.au)**

**>ceda**

